

G610 GSM/GPRS Module

Perfect Wireless Connection



Quad-band



GPRS Class 10



Internal TCP/IP



Extended Temperature Range



Ext.RF



Approved



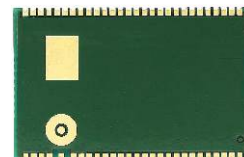
RoHS

FIBOCOM G610 modules are designed based on the application traits of portable products. They have low power consumption, are small in size, and they adopt LCC package. Connectors are omitted for the convenience of bulk processing, thus helping customers reduce the total cost of terminals systematically.

The G610 module supports GSM/GPRS 850/ 900/1800/1900 MHz. It has a built-in TCP/IP protocol stack and a reliable GPRS data connection. The AT command set and G600 are both fully compatible. Numerous extended interfaces such as I2C and definable GPIO can be easily integrated with peripheral equipment and the design of products is simpler and more flexible.

The G610 module meets industrial-grade demands and its production and manufacturing fully conform to ISO/TS 16949 certification. It can adapt to severe working environments with high temperatures, high humidity, and electromagnetic interference.

The combination of extremely compact design and broader temperature range has made the G610 the ideal choice for portable products in the field of M2M technology applications, such as personal location and tracking, vehicle team management, handheld devices, environment monitoring, and remote medical services.



Features

- Quad-band: 850/900/1800/1900MHz
- Ultra Low Consumption: 1.6mA@sleep mode
- Built-in TCP/IP protocol stack
- LCC package, 55pin
- Operating Voltage: 3.3~4.5V
- Sensibility: -108dBm (850/900MHz)
- Size: 31.3 x 20.2 x 3.0mm
- Weight: 3.5 gram
- Operating Temperature: -40~+85°C
- Storage Temperature: -40~+85°C

G610 GSM/GPRS Module

Perfect Wireless Connection

G610 GSM/GPRS Module Technical Specifications

Product Features

Supported Bands

- Quad Band
 - 900/1800MHz
 - 850/1900MHz

Physical

- Size: 31.3 x 20.2 x 3.0mm
- Weight: 3.5gram

Environmental

- Operating temperature: -40~ +85°C

Performances

Operating Voltage

- Voltage: 3.5~4.5V

Current Consumption

- 1.6mA@sleep mode(DRX9)

TX Power

- 800/900MHz class 4(2W)
- 1800/1900MHz class1(1W)

RX Sensitivity

- -108dBm(850/900MHz)

Interfaces

Interfaces

- LCC 55pin

Sim Card

- 1.8V/3.0V
- STK

Connectivity

- UART: BR from 1200 to 230400
- Auto BR supported

Data

General

- Internal TCP/UDP

GPRS

- Multi-slot class 10 (4 Down;2 Up; 5 Total)
- Max BR Downlink 85.6 Kbps
- Coding Scheme CS1-CS4

MUX

- Basic Mode

CSD

- Max BR 9.6kbps

SMS

- MO/MT Text and PDU modes
- Cell broadcast

Voice Features

- Two channels balanced analog audio
- Vocoders EFR/HR/FR/AMR
- DTMF TX
- Audio Control
 - Echo suppression
 - Noise suppression
 - Side tone
 - Gain control

Control/Status Indications

- Power on/off
- Reset
- ADC
- I2C
- GPIO

GSM Supplementary Service

- Call forwarding
- Call hold;waiting;multparty
- Call diverting
- Call barring

Character Set

- IRA
- UCS2
- GSM
- HEX

AT Command Set

- GSM 07.05
- GSM 07.07
- GSM 07.10
- Embedded TCP/IP Stack

Accessories

- Hardware User Manual
- AT Command User Manual
- Evaluation Kit
- Evaluation Kit User Manual
- Evaluation Kit Schematics
- Release Notes
- Flash Tool (for XP)
- MobileAnalyser (for XP)
- Fibo_Center (for Windows XP)

Regulatory and Approvals

- SRRC/CCC/NAL
- CE/FCC/Anatel



Copyright © 1999~2013 Fibocom Wireless Inc.

Subject to changes in technology, design and availability

E-mail : market@fibocom.com Tel : +86 755-8636 8315