

# LTE antenna, LOG PER. YAGI directional high gain antenna max. 18dBi



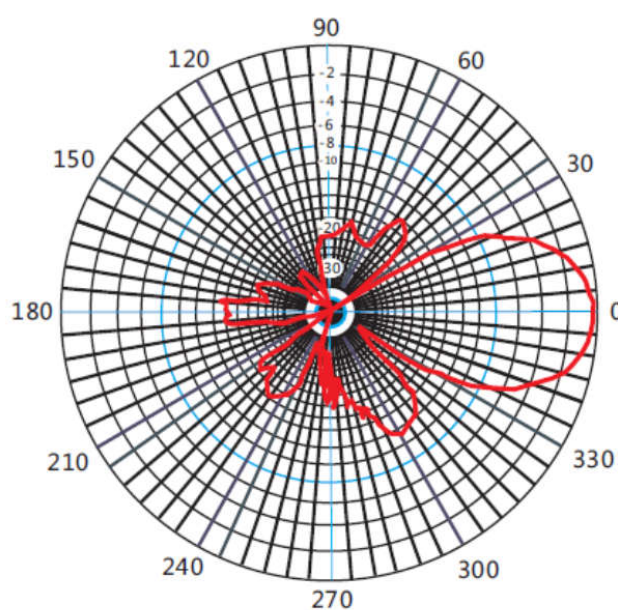
Model : **ANTGSM18YAGI-xx**

## Electrical Specification

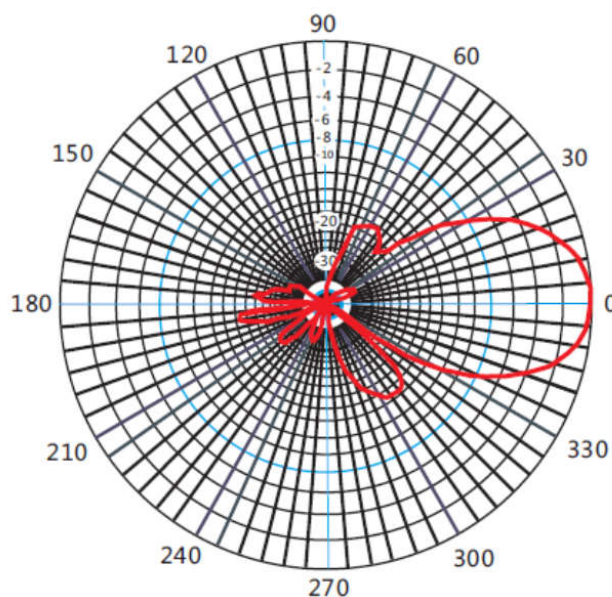
Frequency 1710-2700MHz  
Polarization Vertical/Horizontal  
Horizontal Beam Width 32 deg  
Vertical Beam Width 30 deg  
Gain max. 18 dBi  
VSWR <1.5 : 1  
F/B ratio >18dB  
Max Power 50W  
Impedance 50Ω  
Cable type: LMR-195 or customized  
Connector SMA male or customized

## Mechanical Specification:

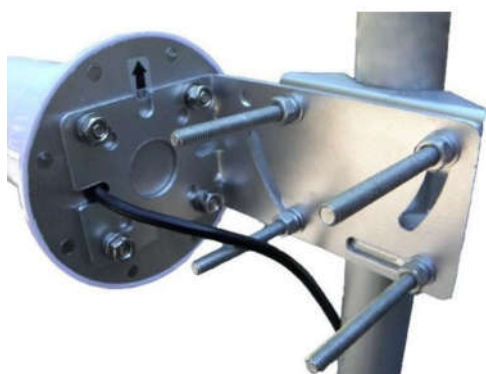
Radome: PC , PVC  
Lightning Protection: Direct Ground  
Weight 1.2 kg  
Size 520x110 mm  
Mount Pole Diameter 30-60mm  
Wind Loading (Frontal) 180km/h  
Operating Temperature Range -40 to +70Degrees  
Storage Temperature -50 to +75Degrees



Horizontal



Vertical



mounting / polarization twist